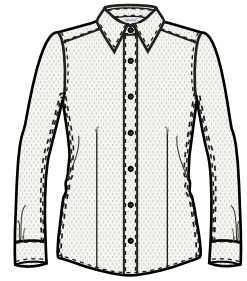


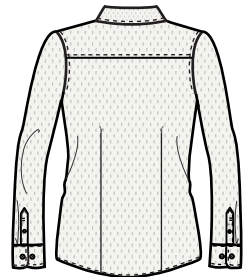


RED HOUSE

THE WINE COUNTRY LIFESTYLE



Front



Back

RED HOUSE™ - LADIES NAILHEAD NON-IRON BUTTON-DOWN SHIRT.

RH47

The understated nailhead pattern and dobby texture-without the need to fuss with an iron. Travel-ready 100% cotton fabric is created with 40-singles compacted yarn enhancing the drape and softness of this striking style. It's specially treated to stay exceptionally good-looking all day long. Single-needle tailoring; gently contoured silhouette, open collar, front and back darts, no patch pocket. Red House engraved buttons and embroidery on the right-sleeve placket.



Care Instructions:
Machine wash warm with like colors
Do not bleach
Tumble dry low
Remove promptly and hang

Finished Measurements in Inches								
Size	XS	S	M	L	XL	XXL	1X	2X
Width	17	19	21	23	25	26.5	28	30.5
Length	25	26	27	28	29	30.25	31.5	32.5
Sleeve	31.25	32	32.5	33	33.5	33 7/8	34.25	35

Chest measured 1" under arm hole. Body length measured from center back neck seam to hem.
Sleeve measured from shoulder seam to hem. Shoulder width measured from arm hole to arm hole.
Sweep measured side seam to side seam.

Colors	
	Black
	Yellow
	Deep Red
	Medeteranian Blue
	Slate Blue
	Tan
	Celery

Please Note: Colors shown are approximate and for reference only. For closest match see PMS colors, or for exact match, returnable samples and grommeted samples are available.

Color Chart				
Colors	Black	Yellow	Deep Red	Medeteranian Blue
General PMS	No Match	No Match	No Match	No Match
Textile PMS	425 C	1345 C	696 C	647 C
Colors	Slate Blue	Tan	Celery	
General PMS	No Match	No Match	No Match	
Textile PMS	429 C	7536 C	5783 C	